

Content Aware Fill in PhotoShop CS5

Software Snippet

Westbridge Camera Club

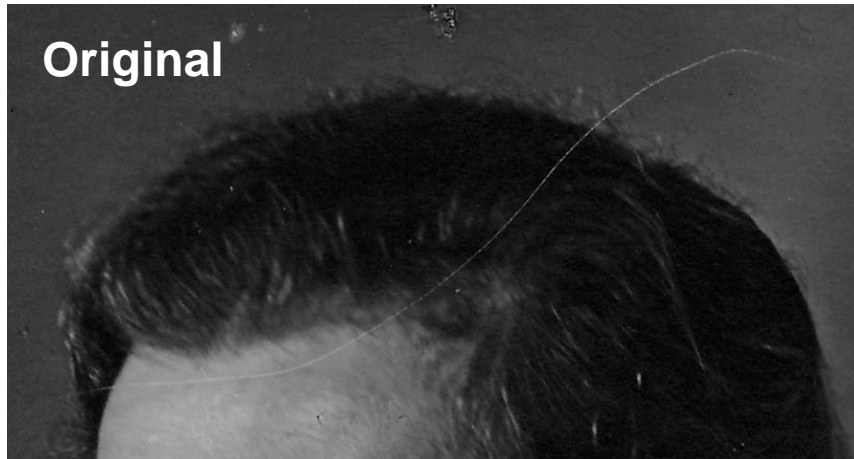
Columbus, Ohio

April 4, 2012

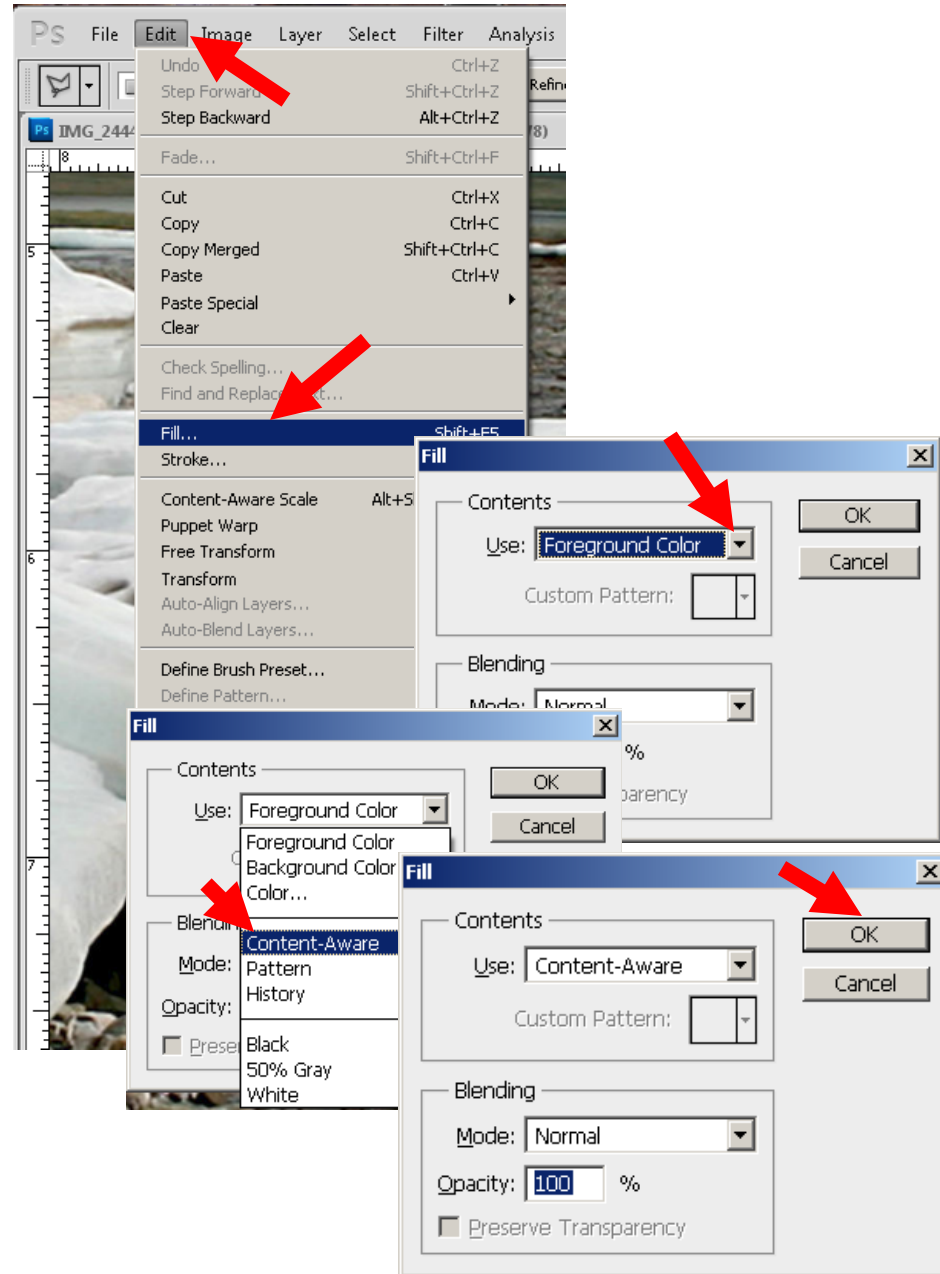
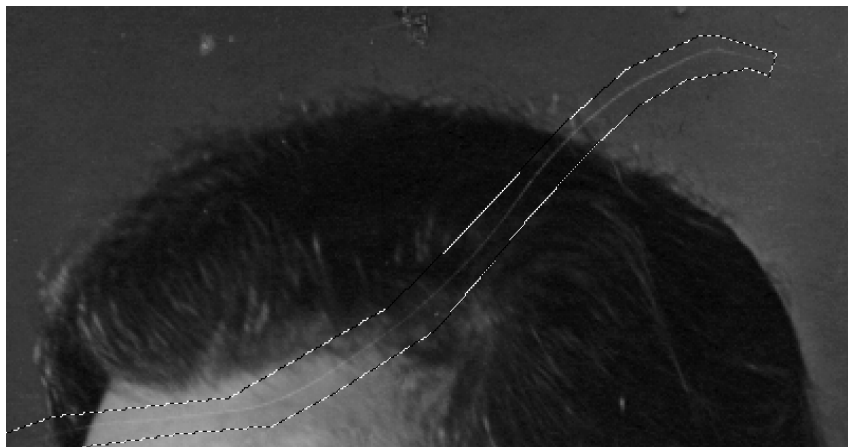
Dick Burry

burry.1@osu.edu

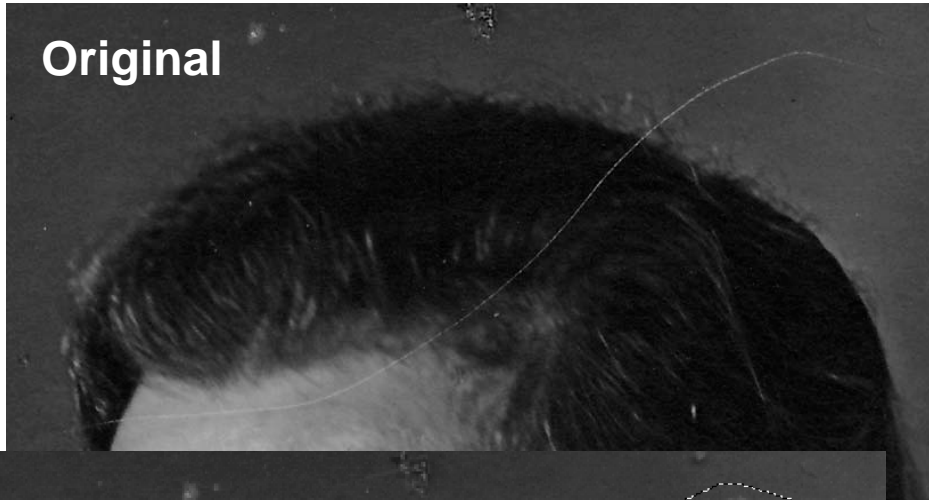
Content Aware Fill is great for covering blemishes or cracks in photos. Use the Stamp or Healing tools is tedious, difficult and does not exactly match.



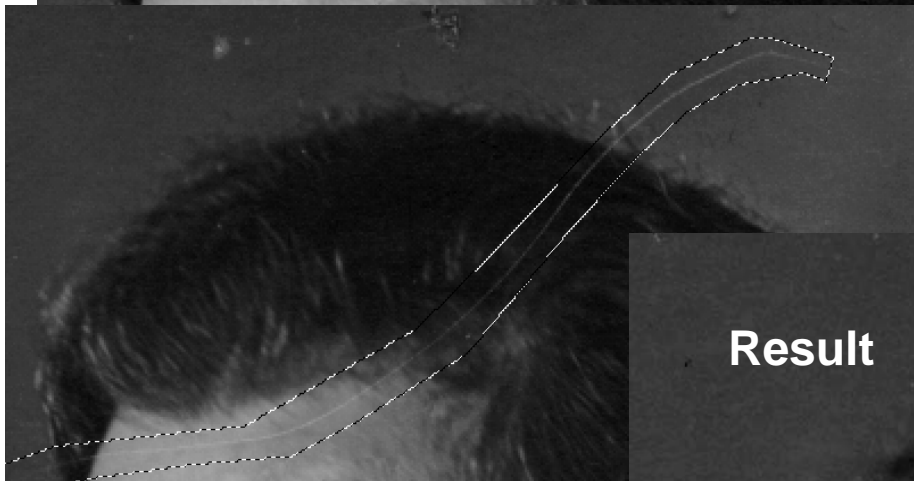
First outline the scratch area above with the Lasso (marching ants below). Next click on Edit, Fill, and Content Aware (right top to bottom).



Original



Content Aware Fill does a great job of blending the shading difference across a fill and duplicating texture of the hair in the fill (blue arrows)

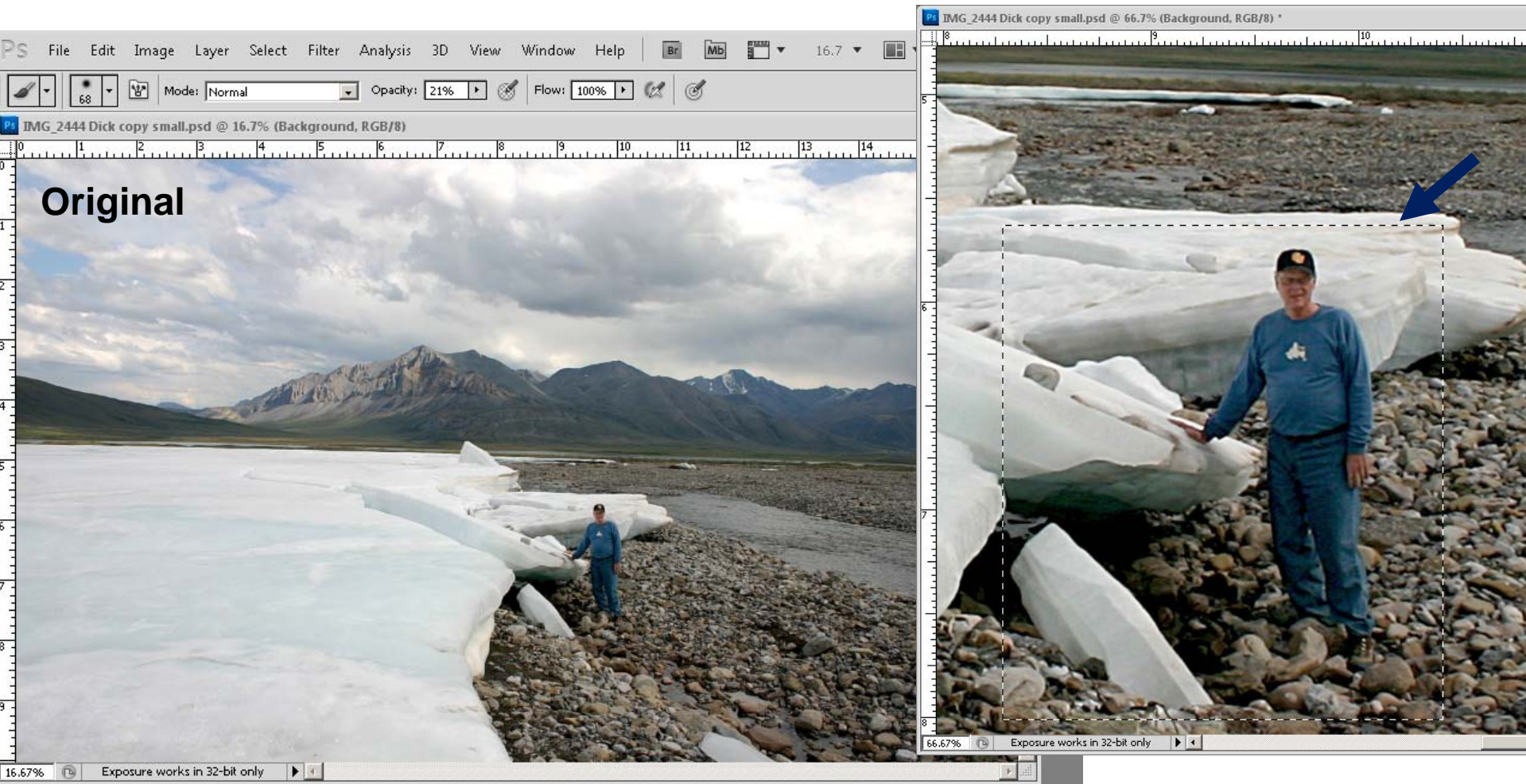


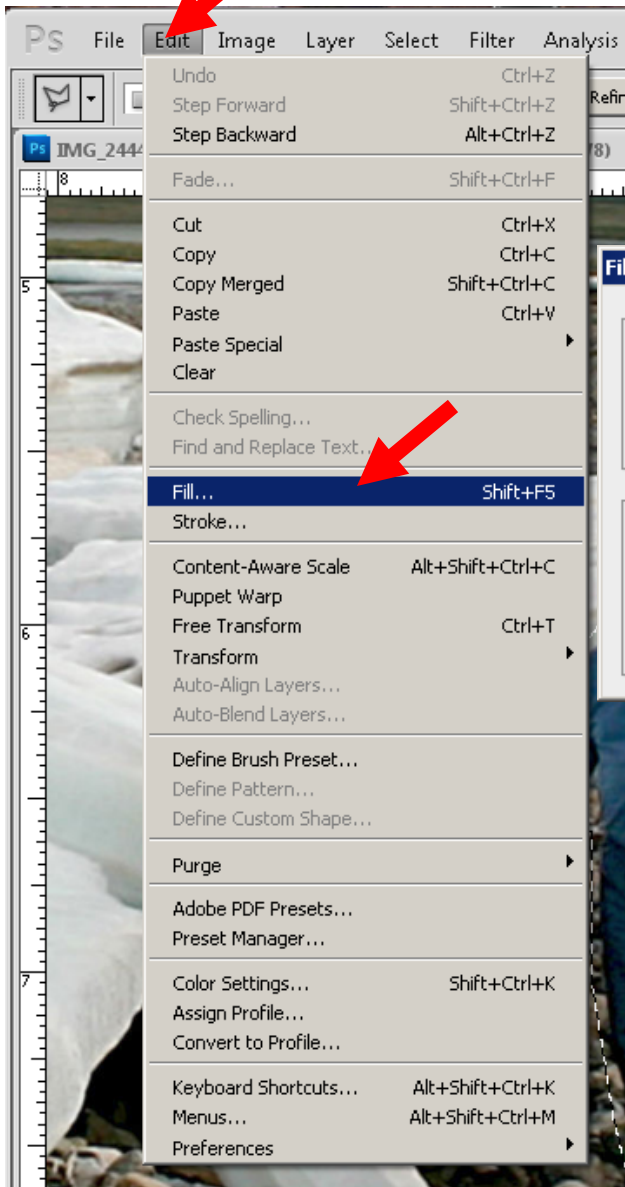
Result



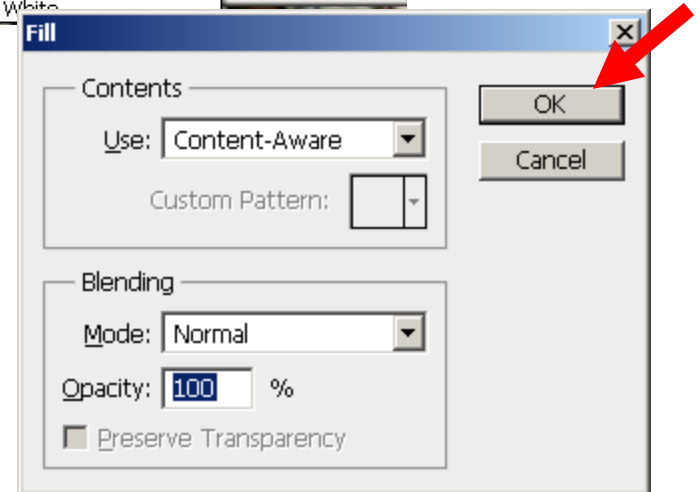
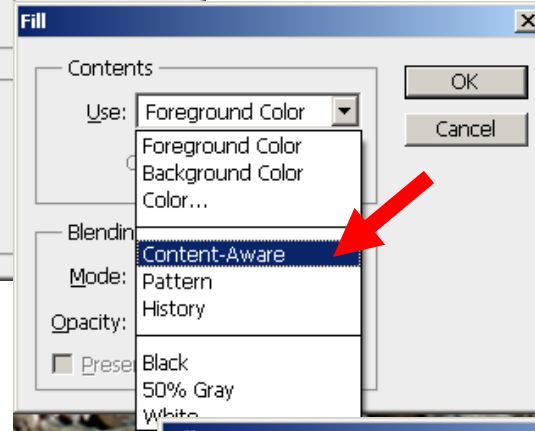
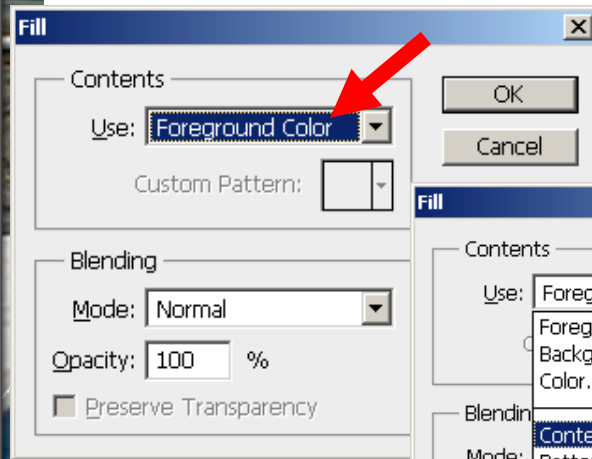
Problems - Content Aware fill is difficult to use in photos with: Large area to fill Many complex shapes

Great photo of me north of the arctic circle in Alaska but lets remove the me in the center. Use Marque box to define an area (marching ants left)





Content Aware Fill is found from the main menu under Edit, Fill and then change the Use window to Content Aware and click OK.

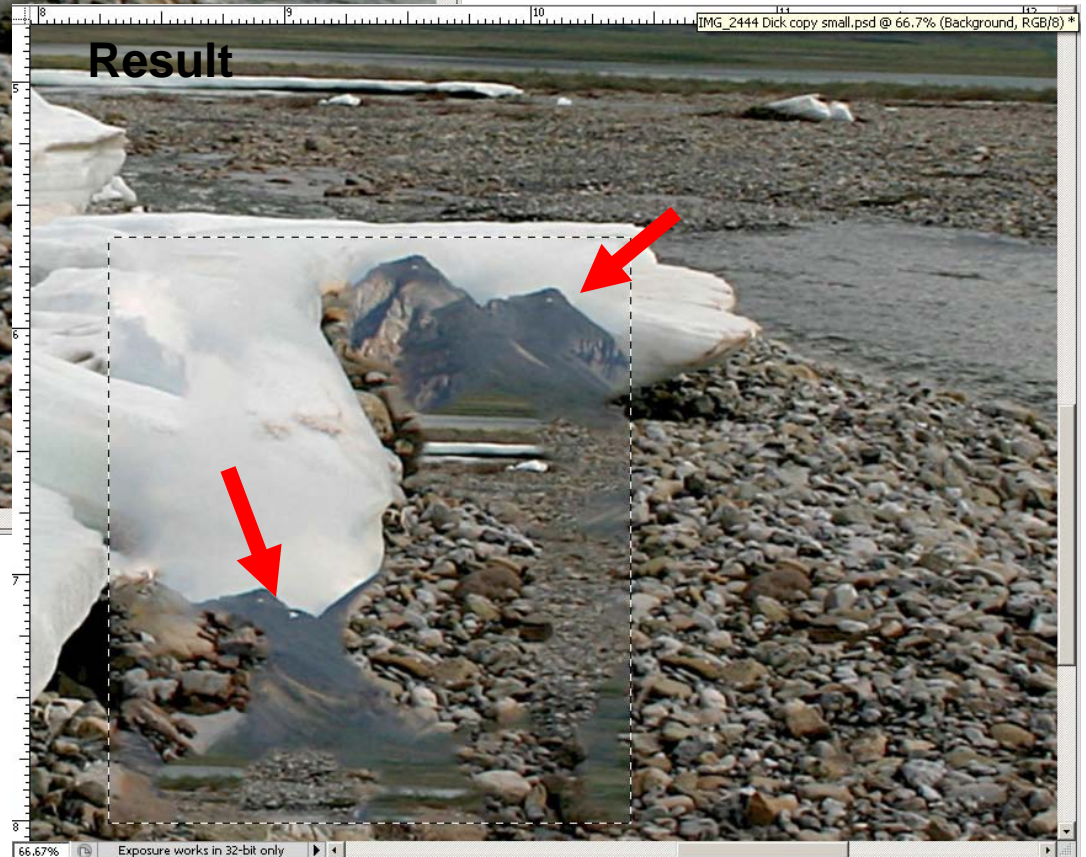


My fix for Content Aware Fill

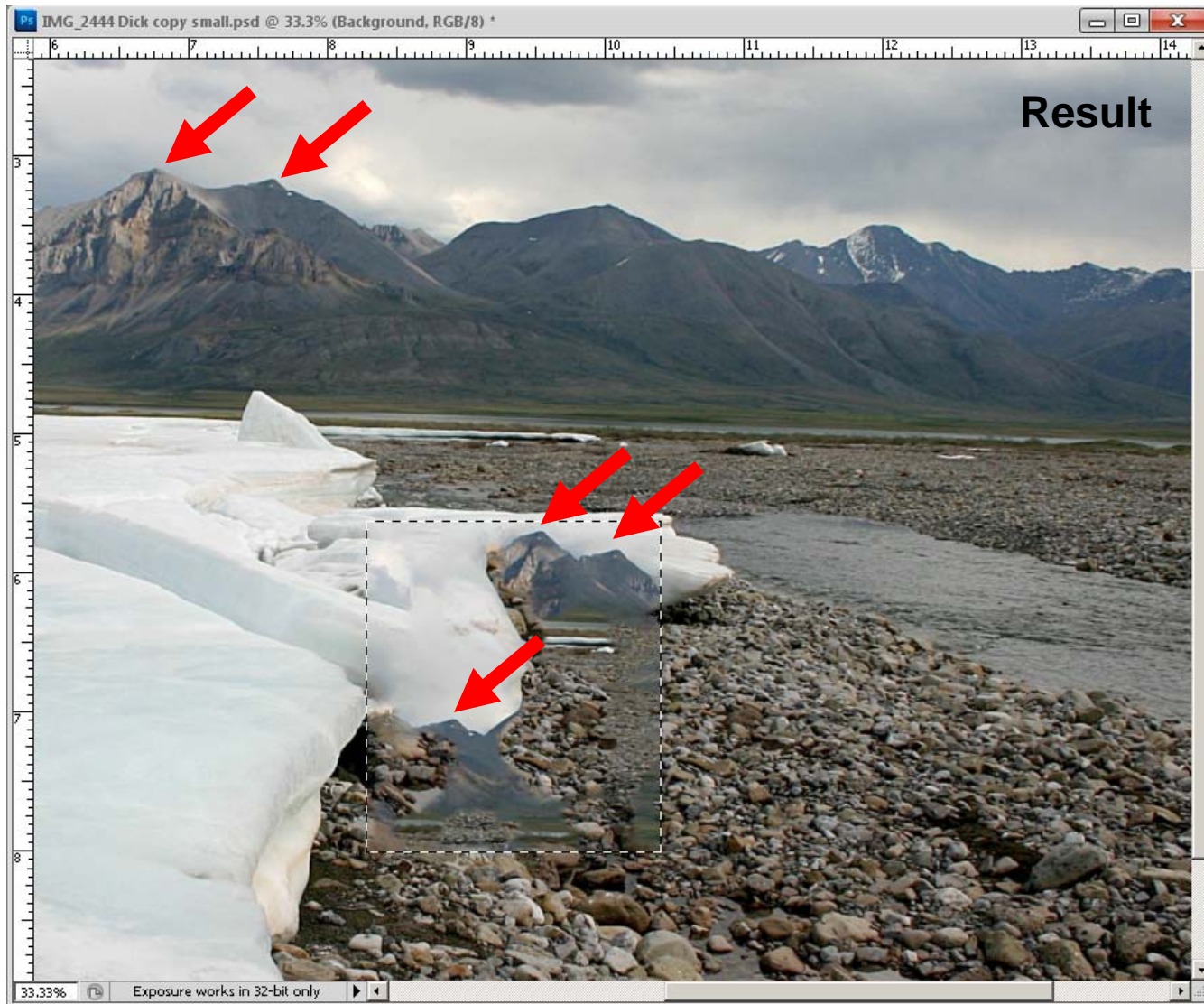


To demonstrate a larger selection box is used (left, blue arrow).

This larger selection gives a fill including mountains from the top of the image (bottom, red arrows).



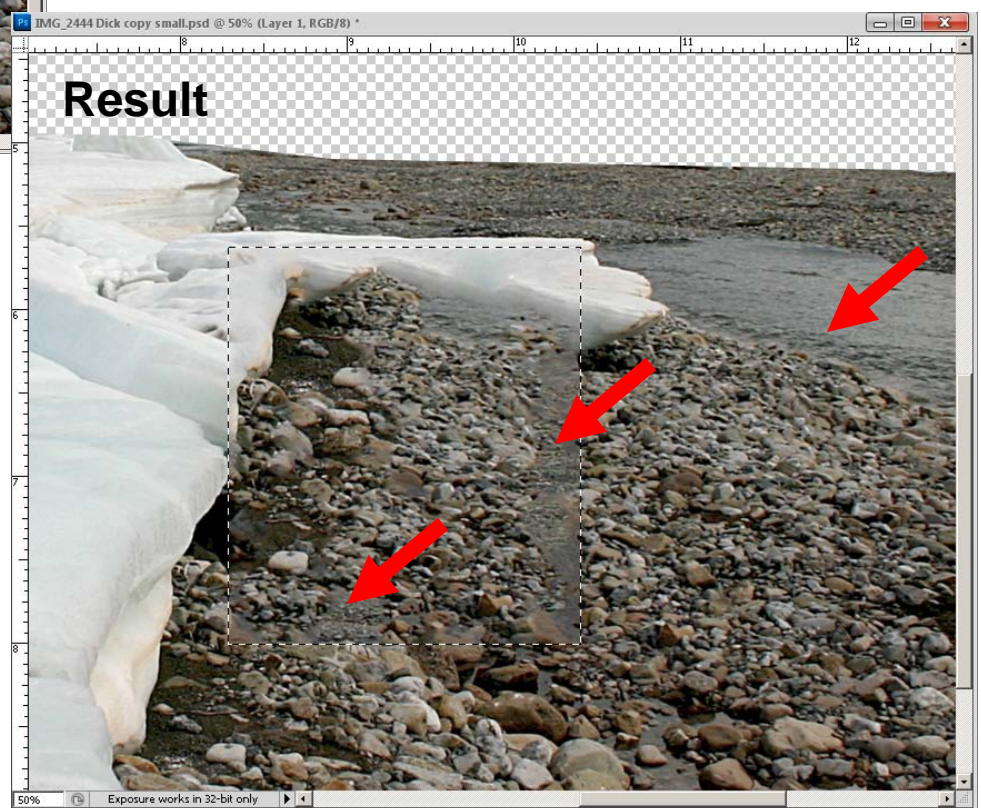
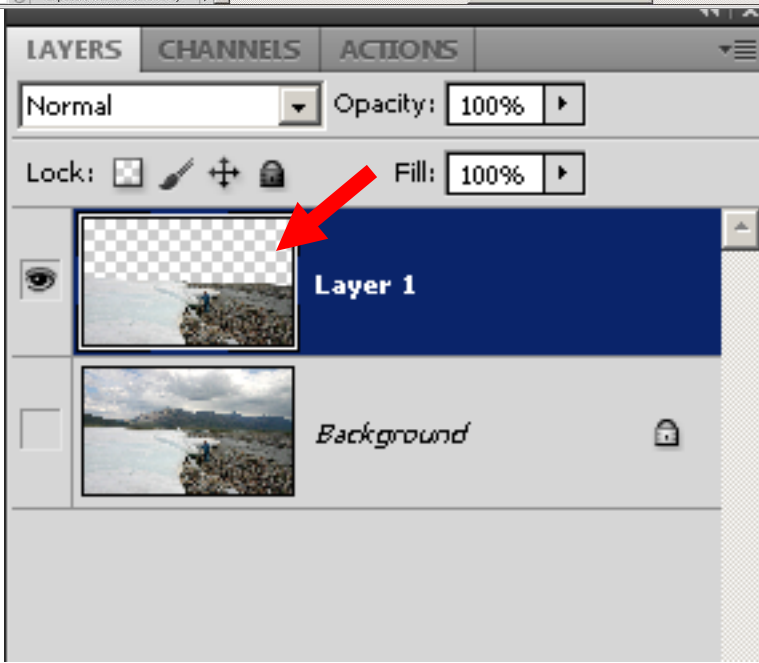
Content Aware Fill uses parts of a photo some distance from the selected area. How can we force Content Aware Fill to select from only places we want? By using a **new layer** with only the ice and rocks and no mountains.





Original

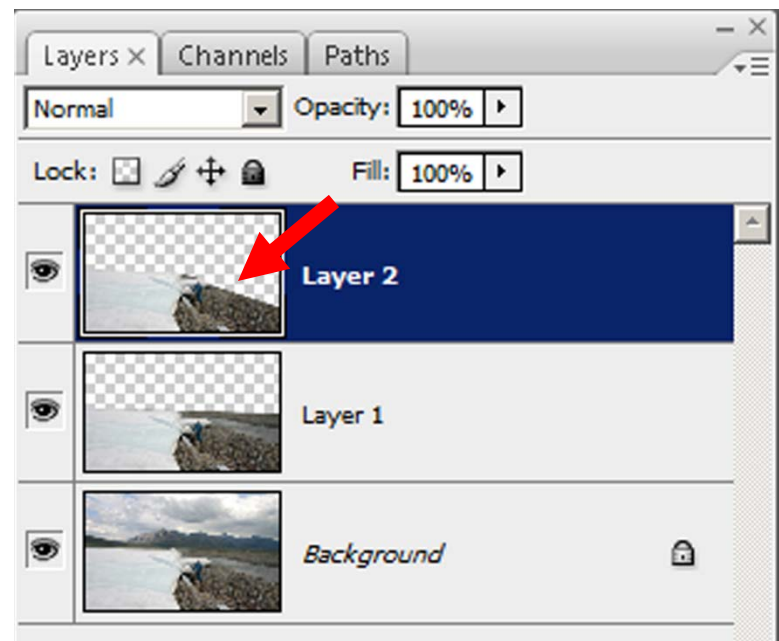
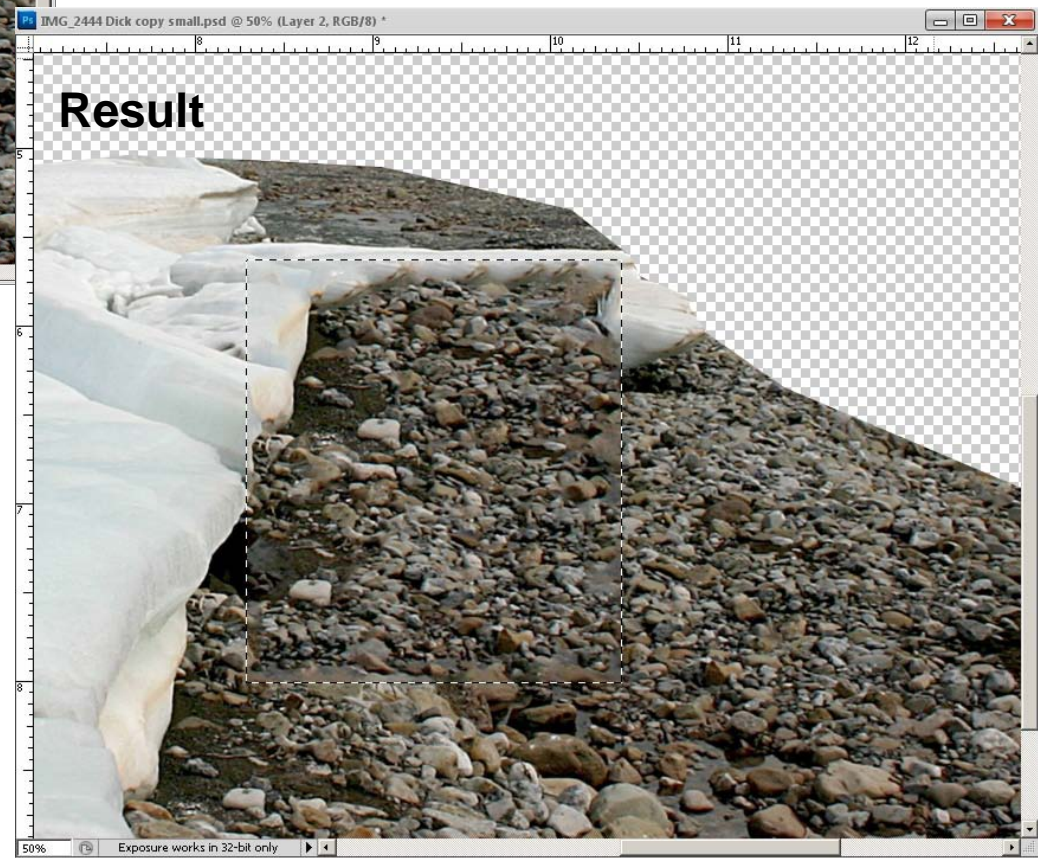
Make a new layer with only the bottom half of the photo (upper left, blue arrow; lower left Layer 1 selection box red arrow).
Select the same area in the new layer and do the Content Aware Fill.
Now mountains are eliminated in our fill but we have too much water (bottom, red arrows).



Result



To eliminate the water, make a new layer (right, Layer 2) with only the bottom half of the photo and include only the rocks no water (see Layer 2 right below red arrow). Success!!! Now water is eliminated and the selected area has only rocks and ice (below).

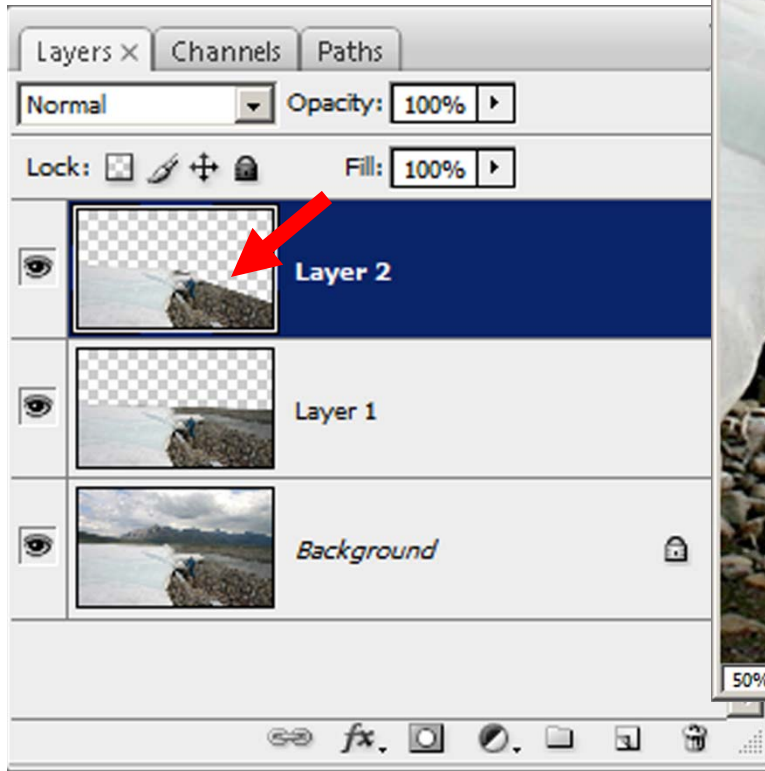


Now we can get the Content Aware Fill to pick the fill from the correct material.
Let's try a smaller area in the original.



Selecting with lasso tool (marching ants) close to me.

Do the Content Aware Fill and then merge all the layers together.



For difficult Content Aware Fills, copy a small part of the photo to a new layer. Do the Content Aware Fill and then merge the layers back into one image.

The trick is to:

- 1. put the material needed for a Content Aware Fill in a separate layer**
- 2. do the Selection and Fill in the separate layer**
- 3. merge that layer back into the original image.**

Result

